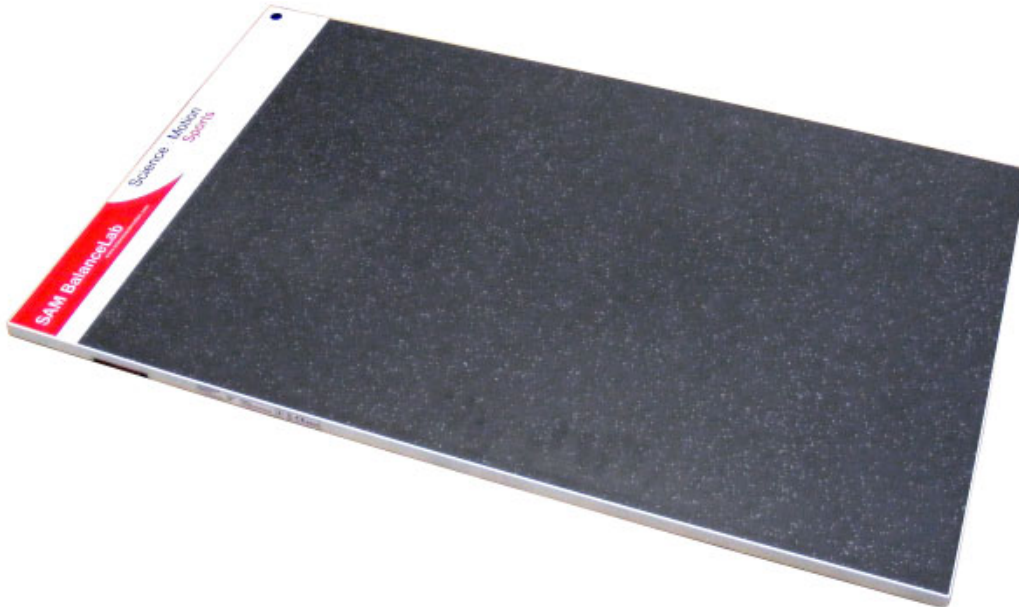




# System Installation Quick Start Guide

**General information:**

This Quick Start Guide describes the software and hardware installation process and the "Measurement" feature in a simple way. Follow the sequence of the steps to avoid problems during installation. Please read the complete operating manual for further details on measurement, reports and data management.



After opening the case in which SAM BalanceLab was shipped, compare the package contents with the illustration on page 12 of the operating manual to make sure all parts are included.

The full operating manual can be viewed as a .PDF-file via the Windows "Start" menu under "Programs > SAM BalanceLab > BalanceLab Manual" after the software installation is completed. If necessary, "Acrobat Reader" setup files can be found on the SAM BalanceLab CD.

**Important Security Note:**

The surface of the system is designed for indoor usage with sports shoes.




- never use the system if damp or humidity is on the surface or on a player's shoes – there is a danger of slipping or falling for the player in this case !
- never step on the plate with golf shoes equipped with hard spikes !

Science&Motion is currently working on a solution with a covering mat for usage with spikes or outdoor usage. Please contact us for availability date.

# Step 1: Hardware Installation

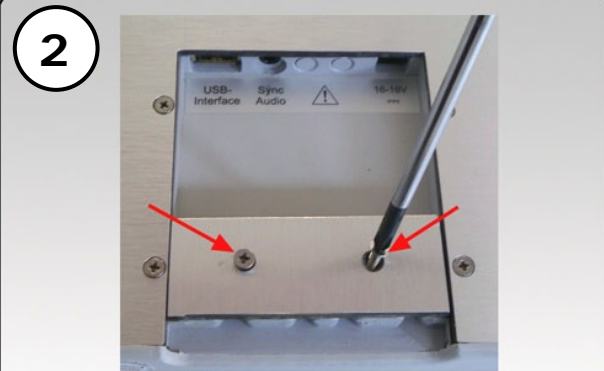
**1**



**Check if all components are available:**

- 1: Audio-sync cable
- 2: USB connection cable
- 3: Screw driver
- 4: Power supply
- 5: BalanceLab force plate

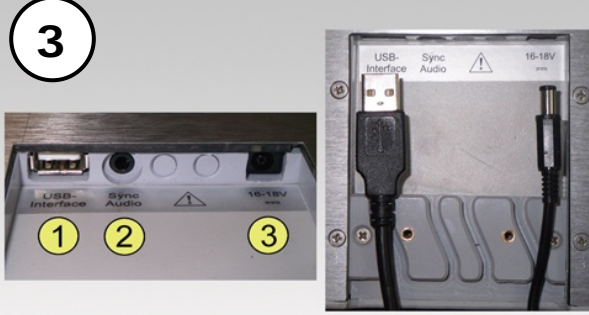
**2**



1: Turn the force plate upside down carefully  
2: Unscrew the screws\* of the connection port cover with the delivered screw driver  
3: Remove the cover plate

\* depending on your model the number of screws can be 2 or 4.

**3**



On the connection port there are 3 data links available.

Connect the USB cable to connector **1** and the power supply cable to connector **3**.

Press the cables carefully into the slits to fix them


**4**

This step is only necessary if you like to use a video camera with the audio-synchronization feature.



If your camera has an external audio or microphone input channel you can use the automatic video synchronization feature. If you like to make use of this, connect the black plastic plug of the audio-sync cable to connector **2**. The silver (metal) plug will go to the camera.

**5**



After connecting of all plugs please be sure that all cables are pushed completely into the sockets.

Then place the cover plate on the connection port and fasten the screws.

**6**

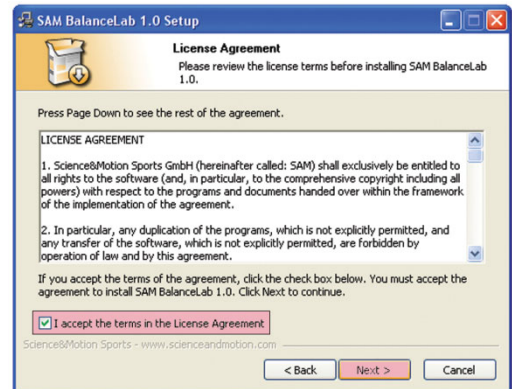


**Do not connect the USB cable to your computer now!**

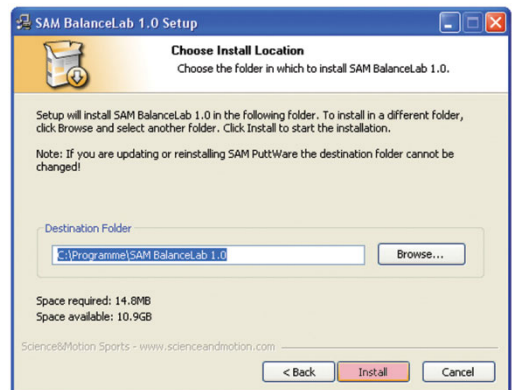
**First execute the software installation like described on the next pages.**

# Step 2: Software Installation

1. Start your PC or Notebook
2. Insert the SAM BalanceLab CD into your CD-drive
3. The installation procedure should start automatically. If auto-start is disabled on your system, please run SETUP.EXE manually from your CD drive.
4. In the first setup screen click the "Next" button to continue.
5. Accept the license agreement by checking the box below the agreement and click the "Next" button.



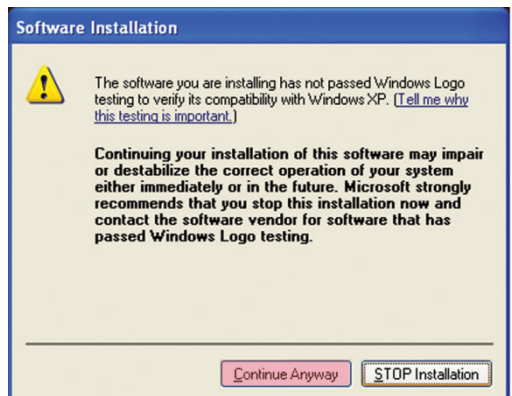
6. Choose a destination folder and click the "Install" button



7. While installing an info screen will appear that now the USB drivers for the SAM BalanceLab will be installed. Click the "OK" button to continue.



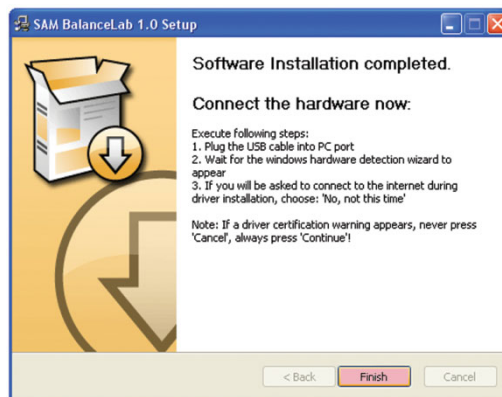
8. Windows will open a "Software Installation" window. Click the button "Continue Anyway". (Depending on the operating system and service pack, this screen may vary or will not appear.)



9. After installation is finished you will be prompted to attach the SAM BalanceLab to your PC / Laptop.



**Now you can connect the SAM BalanceLab via USB cable to a free USB port on your PC / Laptop.**



10. Your computer will notice a newly attached device and the Windows "Found new Hardware" Wizard will pop up. On some systems you will be asked to connect to "Windows Update" or the Internet to search for software.

If so choose "No, not this time" and click "Next". Otherwise simply go on with step 11.



**Under no circumstances cancel the Hardware-Wizard while Windows configures your system!**



11. The "Found New Hardware Wizard" asks you, how to install the Software. Choose to install the software automatically and click the "Next" button to continue.

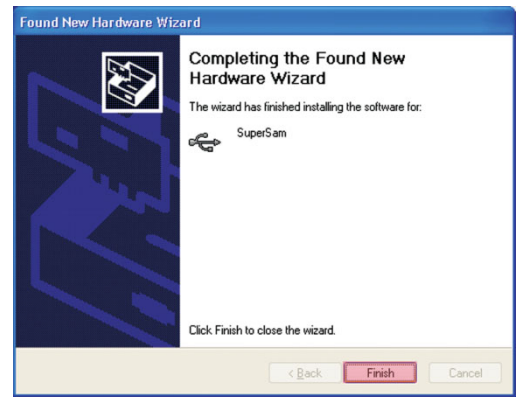


12. Windows will inform you, that the device has not passed the Windows Logo test.

**Click "Continue Anyway" to continue with the installation.**



13. Click "Finish" and the Windows Hardware Wizard will close.



14. The installation window is still open. Click the "Close" button to complete the software installation of SAM BalanceLab.



15. Remove the SAM BalanceLab CD from your CD drive.

# Step 3: Start the software, create Project and Player

## 1. Start SAM BalanceLab

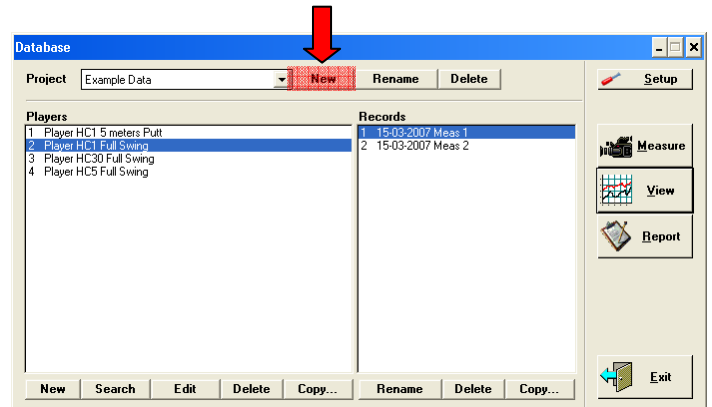
Start "SAM BalanceLab 1.2" via the desktop icon which was created during the software installation. You can also start the software through the Windows start menu under "Programs" and "SAM BalanceLab 1.2."



## 2. You should now see the main program screen.

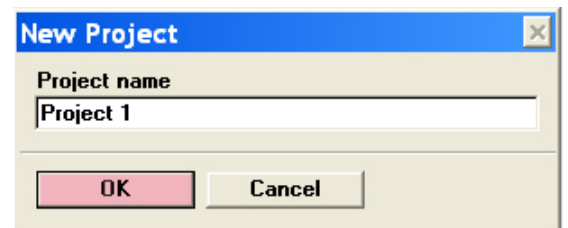
Click the "New" button in the upper middle part of the "Database" window to create a new Project (after installation there is only the Examples Project available which should not be changed).

**i** Projects can hold an unlimited number of Players and help keeping the data organisation concise.

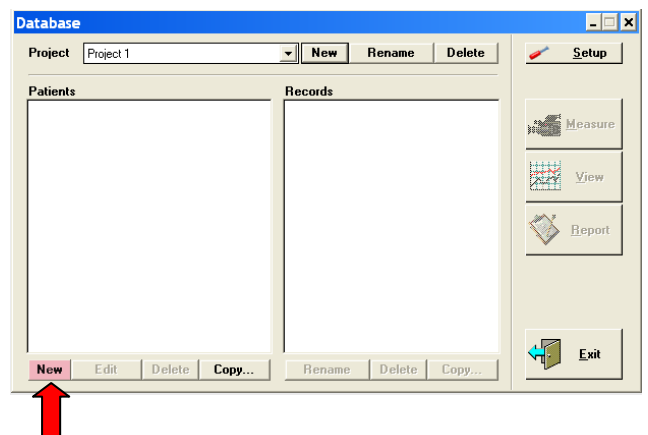


## 3. A window "New Project" will pop up.

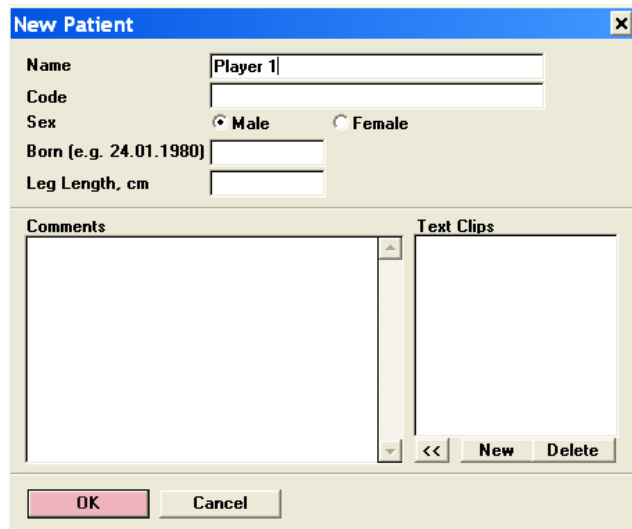
Enter a name for your project and click the "OK" button.



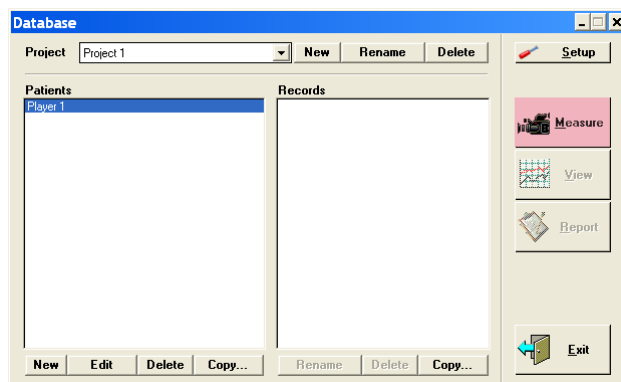
## 4. Now click the "New" button at the lower left corner of the "Database" window to create a new Player.



- A window "New Player" will pop up.  
Enter a name and click the "OK" button.



- Click the "Measure" button at the right part of the "Database" window.



- In the opening "New Record" window choose "Stance Analysis" at the "Type" frame on the left.

At the "Configurations" frame on the lower right choose "Stance".



**Be sure that the SAM BalanceLab is connected to your PC / Laptop via USB cable.**

Now click the "Start" button.



# Step 4: Do a measurement

## Important Security Note:

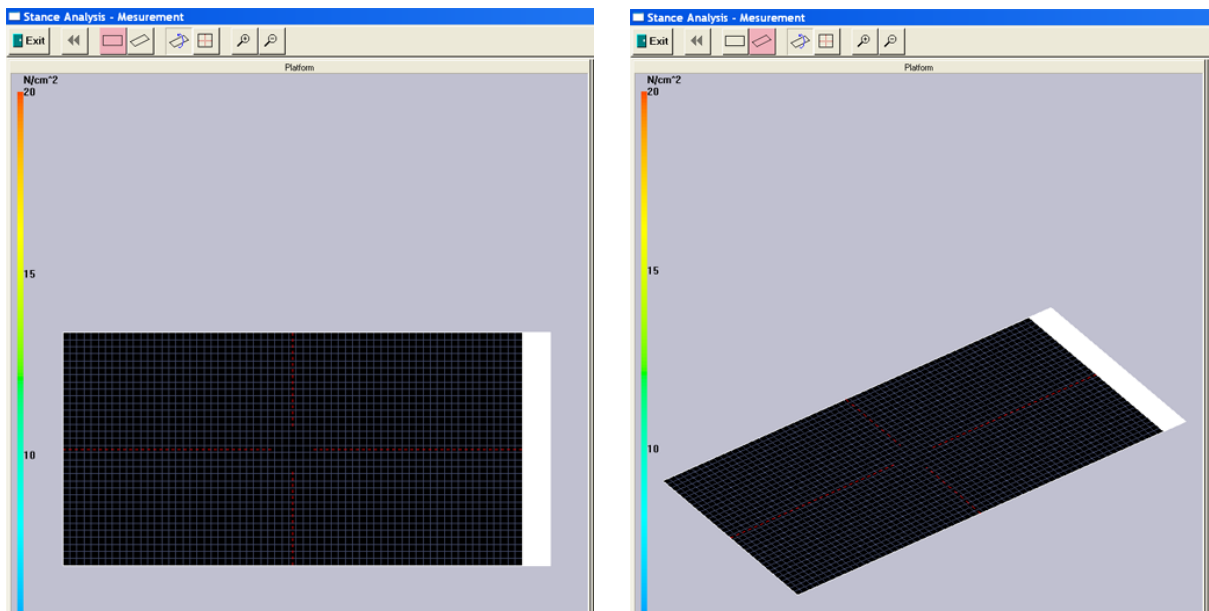
The surface of the system is designed for indoor usage with sports shoes.



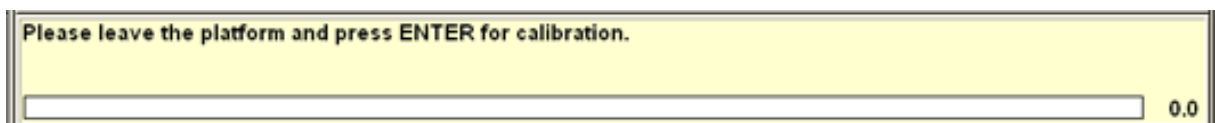
- never use the system if damp or humidity is on the surface or on a player's shoes – there is a danger of slipping or falling for the player in this case !
- never step on the plate with golf shoes equipped with hard spikes !

Science&Motion is currently working on a solution with a covering mat for usage with soft spikes or outdoor usage. Please contact us for availability date.

1. Wait until the software has initialized the hardware.
2. When the software enters the "Measurement" window you can choose between a 2D or 3D graphical view of the force distribution. Therefore use the "Top view" or "3D view" button at the upper left.

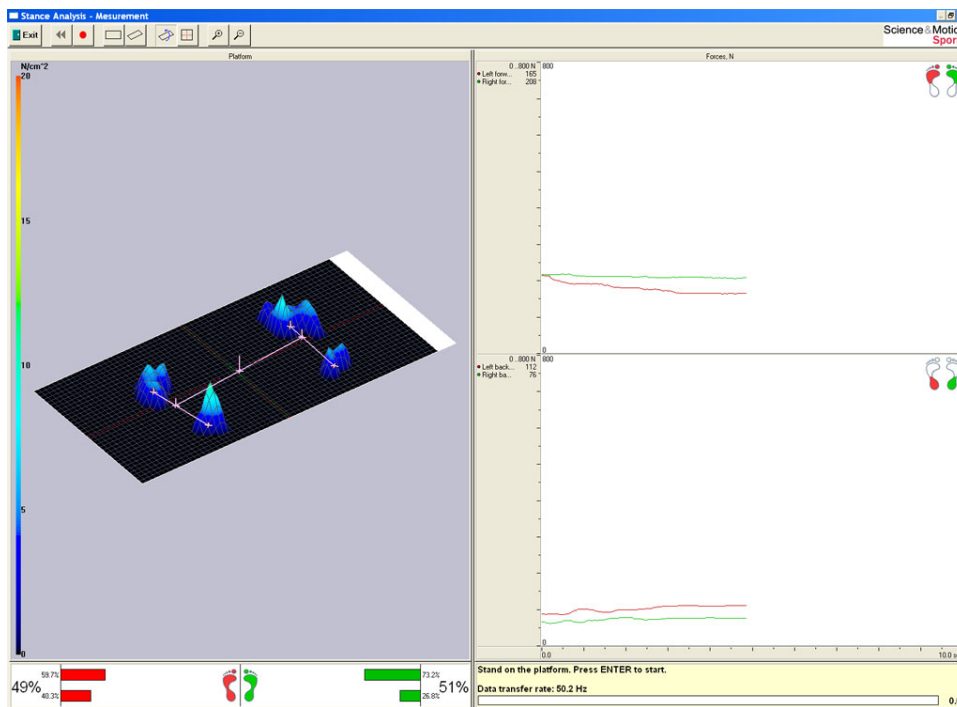


3. Follow the instructions of the yellow box at the lower right:
  - Leave the SAM BalanceLab
  - Press the "ENTER" key at your PC / Laptop for calibration

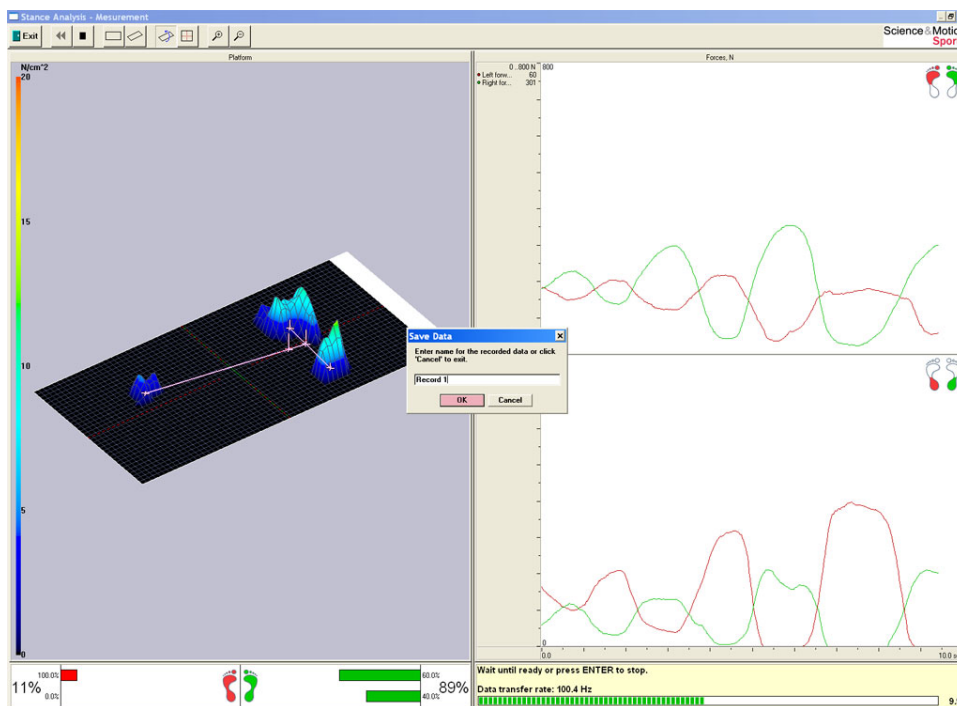


4. Your computer signals you with a short "beep" sound that the system is ready to do a measurement.

- Stand on the SAM BalanceLab and press the "ENTER" key to start the measurement.



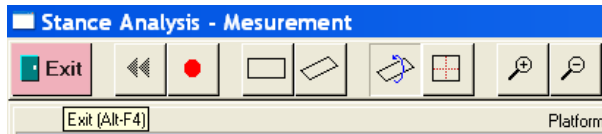
- Do your swinging.
- Press the "ENTER" key again to stop the measurement. Enter a name for your record at the appearing "Save Data" dialog box and press the "OK" button.



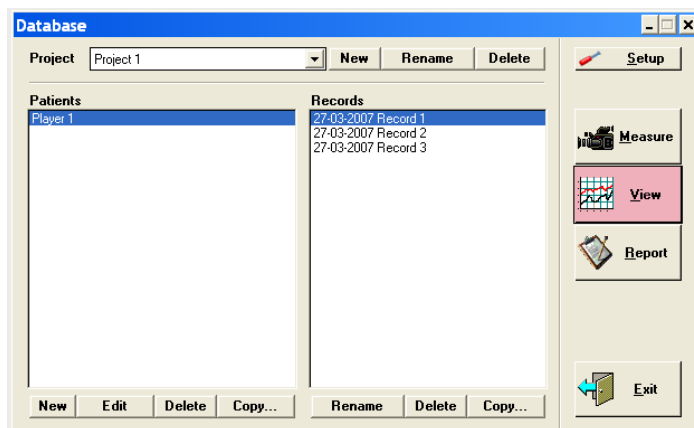
- Your computer signals you with a short "beep" sound that the data was saved successfully and that the system is ready to do further measurements.

# Step 5: Review measurements

1. Exit the "Measurement" window by pressing the "Exit" button at the upper left corner or press the "Alt" and "F4" key at your computer.



2. You re-enter the main program screen. Choose a record at the "Records" frame and press the "View" button.



3. Press the "ENTER" key at your computer to start / stop the replay or use the "Play" button at the upper left. While stopped you can also navigate through the replay step by step by moving the dotted line at the right frame.

